

PLAN DU NICOIR FABRIQUÉ À L'ATELIER DU 5 NOVEMBRE 2011



TAILLE

LE TOIT, TAILLER 2 MORCEAUX de $7 \frac{1}{4} \times 12 \frac{3}{4}$

LA FACADE ET LE DERRIÈRE, TAILLER 2 MORCEAUX de $9 \frac{1}{4} \times 9 \frac{1}{4}$

LE COTÉ COURT, TAILLER 1 MORCEAU de $8 \frac{1}{2} \times 4 \frac{1}{2}$

LE COTÉ LONG, TAILLER 1 MORCEAU de $9 \frac{1}{4} \times 4 \frac{1}{2}$

LA BASE A L'INTÉRIEUR, TAILLER 1 MORCEAU de $4 \frac{1}{2} \times 4 \frac{1}{2}$

L'ORIFICE, UN DIAMÈTRE DE $1 \frac{1}{4}$ pour le troglodyte et mésange

$1 \frac{1}{2}$ pour le merlebleu et l'hirondelle bicolore.

This birdhouse is a basic design, and although it varies from the traditional bluebird house, it was built to meet the specifications for attracting bluebirds. When building the box, keep in mind that it should be able to be opened for cleaning purposes. Also leave holes in the bottom to allow water to drain and air to ventilate the birdhouse.

The box shown was painted with a light color to keep it cool inside. If you want to give it a weathered look, use sandpaper to remove some of the paint. This birdhouse was just recently built, but it looks as if it has endured a few seasons outside.

Mount your finished cube on a fence post or pole 4' to 6' off the ground in open areas such as fields and pastures.



< 1 >

Cut the parts according to the cutting list. Cut a 45° bevel on the tops' two short edges. Then glue and nail the two top parts together at the miter joint. Set this assembly aside for the moment.



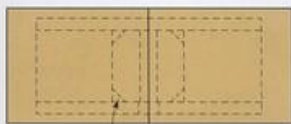
< 2 >

After cutting the hole in the front part, glue and nail the bottom and sides to the front. Flip over this assembly and glue and nail the back in place.



< 3 >

Glue and nail the top assembly in place.



Clip the corners off bottom for drainage.

